

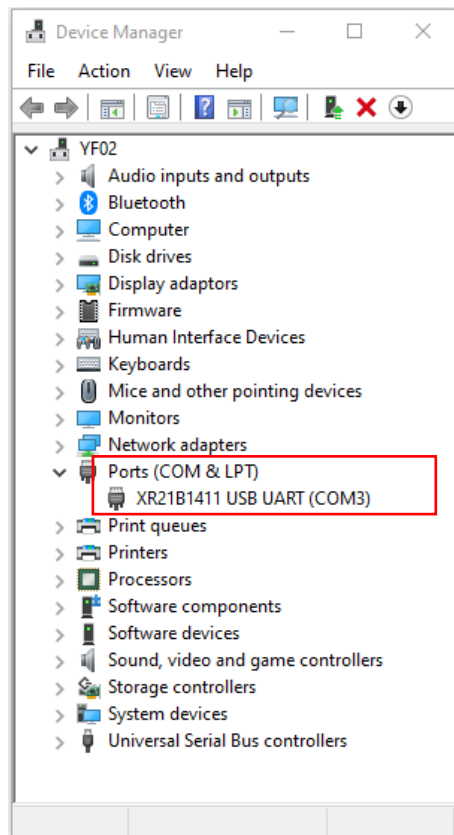
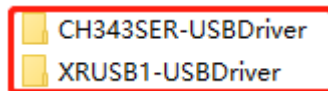
## Controller Software Upgrade

### Step1: Install USB Driver

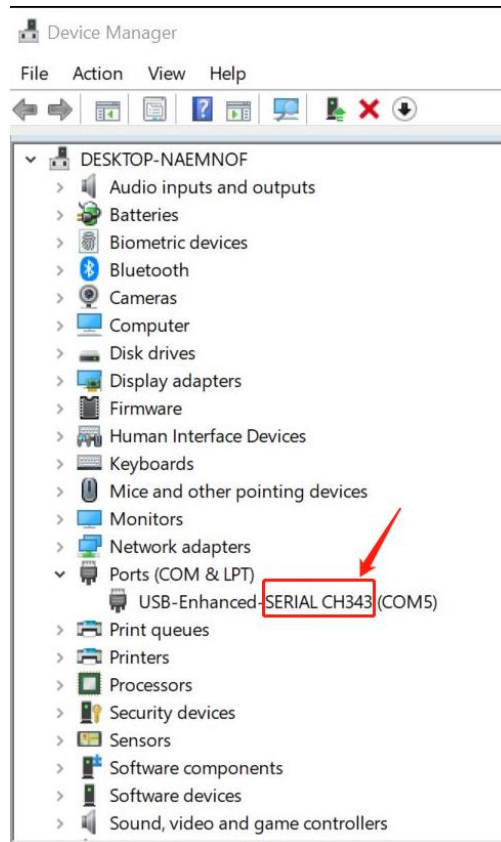
Device Manager →

Ports (COM and LPT)→

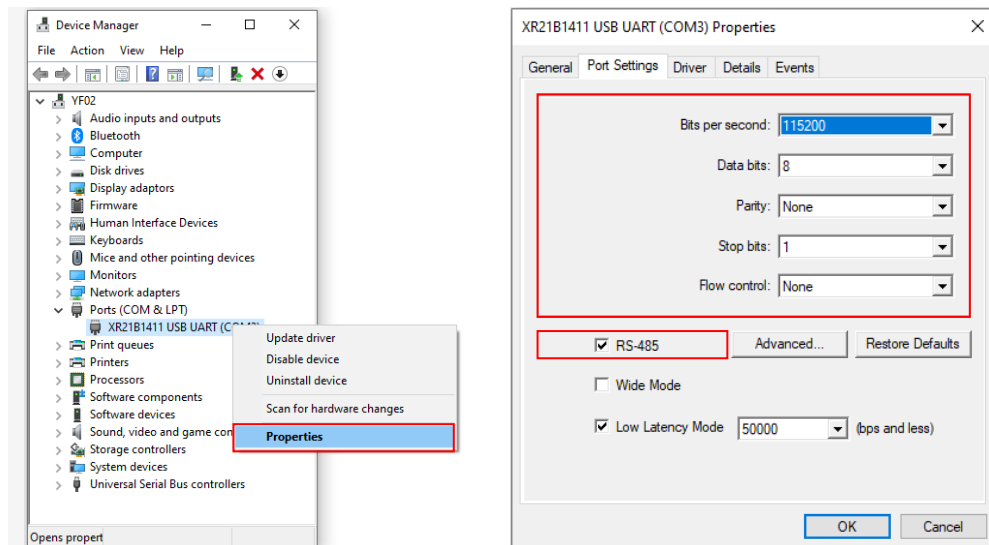
Check USB cable properties as below



or



**Step2:** Set the USB to RS485 converter's port parameters by the following figure.



Note: Please ignore this step if the USB driver of your cable CC-USB-RS485-150U is CH343P.

### Step3:

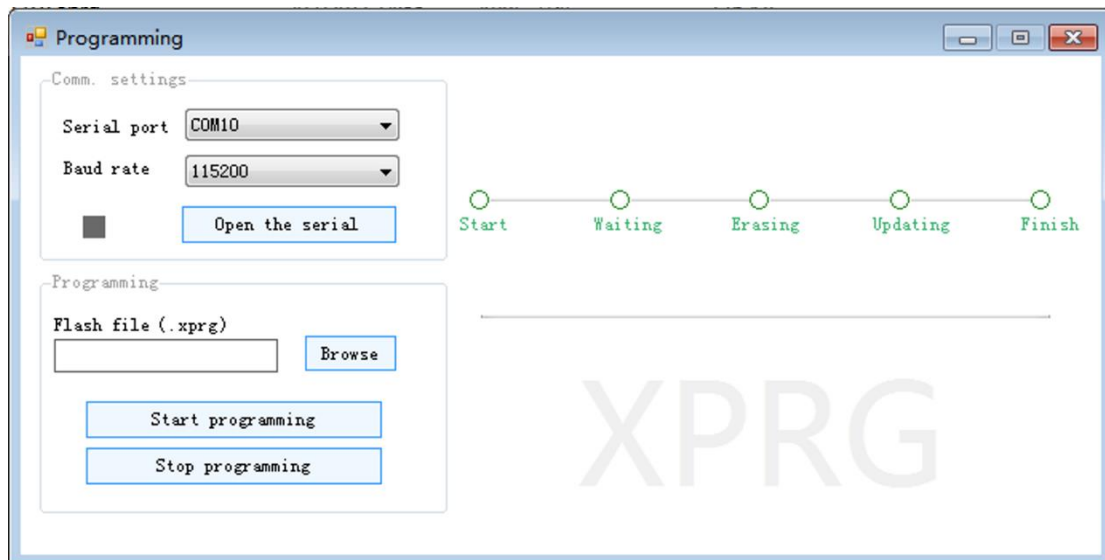
Connect USB cable and PC, →

then connect battery with controller, →

**but DON'T POWER ON controller!**



Step4: Open software  PrgUpdateARM-En



Modify "Serial port" to be same as Device manager →

Modify "Baud rate" to be 115200 , click 'Open the serial' →

Click Browse, choose '*XTRA\_N\_G3\_V1.0.9.aprg*' (just for an example) →

Click 'Start programming' →

**Then power on the XTRA-N G3 (just for an example) →**

Then programming starts and LCD doesn't show any data →

finishing updating, the software shows 'Program burned successfully!' →

Then the LCD will return to normal in five minutes.

